



[www.gayatrigeearsales.com](http://www.gayatrigeearsales.com)

# GAYATRI<sup>®</sup>

## Product Range



**GAYATRI<sup>®</sup>**  
**Gear Sales Corporation**



**GAYATRI**  
**Gear Sales Corporation**

## Company Profile

### ABOUT US

**Gayatri Gears** established in the year 1989 by Mr. Rameshbhai who has experience in this field. his in-depth knowledge along with his organization skills has helped us in attaining a formidable structure in the market. we are a faithful organization to engage in manufacturing and supplying different kinds of gears, gear shaving in addition to these products, we also manufacture worm gear & helical gear units. the products that we offer are appreciated by our clients because of noiseless operation, easy installation and minimum maintenance cost.

### MANAGEMENT

The company runs under skillful management headed by **Mr. Sanket (MD)** who has a vast specular proficiency aids to effective and efficient management, and also execution of any customized orders within the time limit. The quality feature of the company is the skilled, qualified and committed employees, who consistently support the commitment of delivering high quality products to meet up to date demand. The combined synergy of the management and the workforce has enabled **Gayatri Gears** to achieve one of the best in the large scale market.

### INFRASTRUCTURE

The sophisticated infrastructure facility accurately supports our core concern of providing quality products at economical price. Our work shop is fully equipped with high-end machines, precise engineering products and tools for manufacturing gears and assists in maintaining the quality level at par with the leading manufacturers. We always trust in quality and quality has been the prime importance in all stages of manufacturing and assembling of gears and so for that **Gayatri Gears** is now a day a trusted name in gear manufacturing industries.





## WORM GEAR & WORM SHAFT

Gayatri Gears offers wide range of worm shafts & worm gears in phosphor bronze (pb) material, cast iron, stainless steel, aluminum & in alloy steel in both soft and hardened & ground condition with size varies from  $\varnothing 20\text{mm}$ - $\varnothing 250\text{-mm}$  and length 50mm-800mm & pitch size 1mm-50mm, worm gears and in very wide range from  $\varnothing 20\text{mm}$  to  $\varnothing 800\text{mm}$ .

**Module :** 0.5 to 12.00

**Application Range :**

Worm reduction gear boxes, printing machinery, textile machinery, cement plant, general industrial machinery application.



## RACK & PINION

Gayatri Gears offers wide range of rack & pinions which are widely used in the machine tools, material handling equipment and automobile industries particularly in steering gear boxes. pinion and rack arrangements are provided with involute teeth, both ends of the racks are designed in such a way that several racks can be linked to obtain any desired length.

**Module :** 0.5 to 8.00

**Rack Length :** Max. 1200mm



## SPUR GEARS

Gayatri Gears is one of the trusted manufacturer, supplier & exporter of a broad range of spur gears. this gears can be supplied with various material configurations like-CK45/AISI1045, EN19, EN24, SAE 8620, EN 353, 16MnCr5, 20MnCr5 in soft form and in hardened & ground from.

**Size Range :** From  $\varnothing 15\text{mm}$  to  $\varnothing 1600\text{mm}$ , Width-20mm to 500mm.

These gears are precisely machined on state of art-CNC lathe and VMC machines followed by gear cutting on imported gear hobbing machines or gear shapers followed by full hardening or case hardening depending upon the raw material selection. also available teeth cuttings, shaving and grinding facility.

**Module :** 0.5 to 12.00

**Salient Features :**

- Flawless performance
- Long working life
- Robust in design
- Noise Free with extra load carrying capacity.





## HELICAL GEARS

Gayatri Gears is one of the trusted manufacturer, supplier & exporter of a broad range of helical gears these gear can be supplied with various material configurations like-CK45/AISI1045, EN19, EN24, EN36C, SAE 8620, EN 353, 16MnCr5, 20MnCr5 in soft form and in hardened & ground form.

**Size Range :** from  $\varnothing$  15 mm to  $\varnothing$  1600mm, width-20mm to 500mm.

These gears are precisely machined on state of art-CNC lathe and VMC machines followed by gear cutting on imported gear hobbing machines or gear shapers followed by full hardening or case hardening depending upon the raw material selection. also available teeth cuttings, shaving and grinding facility.

**Module :** 0.5 to 12.00

**Application Range :**

Plastic machinery, earth moving equipment, textile industries, sugar industries, rolling mill, food industries, elevator & conveyor, compressor etc.

**Salient Features :**

- Flawless performance
- Long working life
- Robust in design
- Noise free with extra load carrying capacity.



## INTERNAL SPUR GEARS

Gayatri Gears offer various size range and capabilities for Internal Spur Gears as mentioned below Internal gears have a minimum diameter of 25mm and maximum of 280mm.

**Module :** 0.5 to 6.00

Maximum width of 100mm.



## PINION SHAFT

Gayatri Gears offers various types of pinions or pinion shaft for various applications like-automobile, speed reduction gear boxes, gear motors, packaging machines, textile machines and printing machines etc. in different material like - CK45/AISI1045, EN19, EN24, SAE 8620, EN 353, 16MnCr5, 20MnCr5 in soft form and in hardened & ground form.

**Size Range :** from  $\varnothing$ 20mm to  $\varnothing$ 630mm, length-20mm to 500mm

**Module :** 0.5 to 10.00







## SPLINE SHAFT

Gayatri Gears offers spline shafts which are extensively used in earth moving equipment, textile machinery, auto parts, starter motor, printing machinery, geared motor, gear oil pump, agriculture machinery, machine tools and many more applications. these are made of alloy steel.

Our hobbing capability is: from 10mm to 150 diameters pitch from module 0.5 to 10, and a maximum length of 500 mm. for shaping, we can cut external and internal splines, with a diameter from 15 mm to 250 mm.

**Module :** 0.5 to 6.00

We can cut both involute and straight sided splines we work in metals like gray cast iron, alloy steel, aluminium and stainless steel.



## CHAIN SPROCKETS

Gayatri Gears offers chain sprocket including conventional hobbing & climb hobbing. We can produce sprockets with a diameter from 1" to 48" and a pitch from 1/8" to 1.50".

Our range of finishing services ensures the delivery of a precision, ready-to-use product; grinding, hobbing. We can also heat treat sprockets, using flame, nitriding, carburizing, or induction treating. We work with a full range of materials, metal to plastic, from aluminium to alloy steel. Our production shop accepts jobs from prototype and short runs, all the way up to large scale production runs.

Chain Sprockets available with hub (one side and both side) as per customer requirement.



## FIBERS & NYLON GEARS

Gayatri Gears offers various types of fibers & nylon gears available with steel hub & without steel hub as per customer requirement.

**Module :** 0.5 to 10.00

**Size :**  $\varnothing$ 20mm to  $\varnothing$ 300mm,

**Width :** 15mm to 300mm.



## GEARS COUPLING & CHAIN COUPLING

Gayatri Gears offers various types of gear coupling & chain coupling available with EN-8 & MS materials as per customer requirement.

**Module :** 3 to 6

**Gear Coupling Size :** 1 To 19

**Chain Coupling Size :** 3/8" X 14 To 1.25" X 20





## SPIRAL & STRAIGHT BEVEL GEARS

The modified helical teeth of spiral bevel gears create dependable, tooth-to-tooth traction that minimizes backlash and prevents the gears from slipping. The gears are carefully spaced to allow lubricants to be spread evenly.

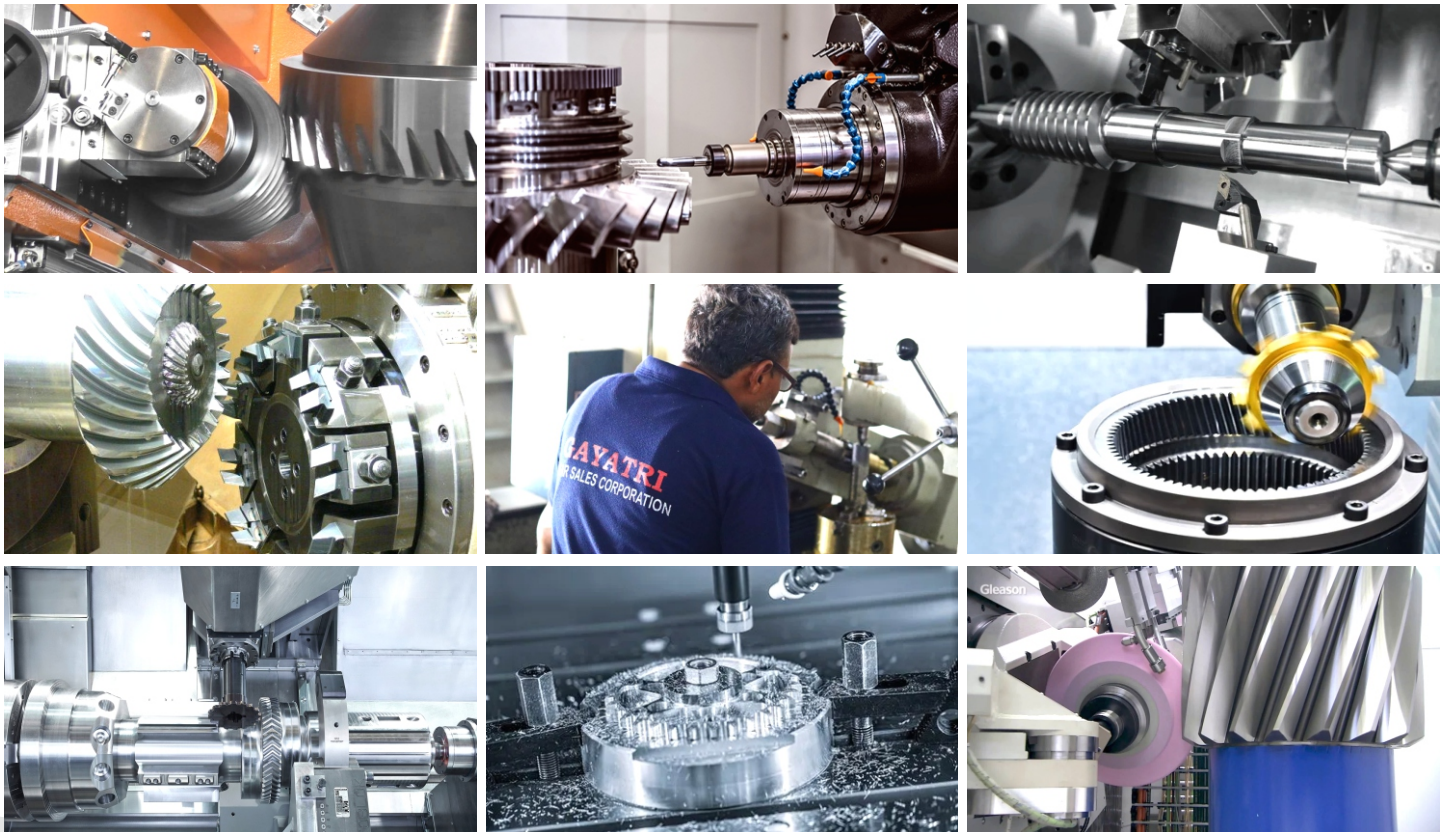
Spiral bevel gears are designed for applications that require high speed and high torque power. They can help cut consumer costs by providing long-lasting performance with minimal need for repairs or replacements. With spiral bevel gears, there is no need for offsets and a significantly reduced risk of overheating. Curved teeth and deeper traction between those teeth ensures greater asset availability to improve flexible performance and extend equipment life.

**Module Capacity : 1 to 12 Module**

**Diameter Size :  $\varnothing$ 20mm-0500mm**



## MACHINERY, MANUFACTURING FACILITY



- CNC Turning Center
- VMC Vertical Mill Center
- Gears Hobbing

- Gears Shear
- Bevel Generator
- Slotting Machine

- Welding Machine
- Radial Drill Machine
- Milling Machine





# GAYATRI<sup>®</sup>

## Gear Sales Corporation

### OUR OTHER PRODUCTS



HDD Machine Sprocket



HDD Auto Loader Shaft



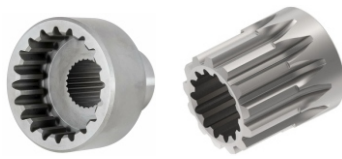
Ratchet Gears



NMRV Worm Reducer  
(NMRV030 to 130)



R Series Gears Box  
(R47 to R137)



HDD Water Pump Coupler



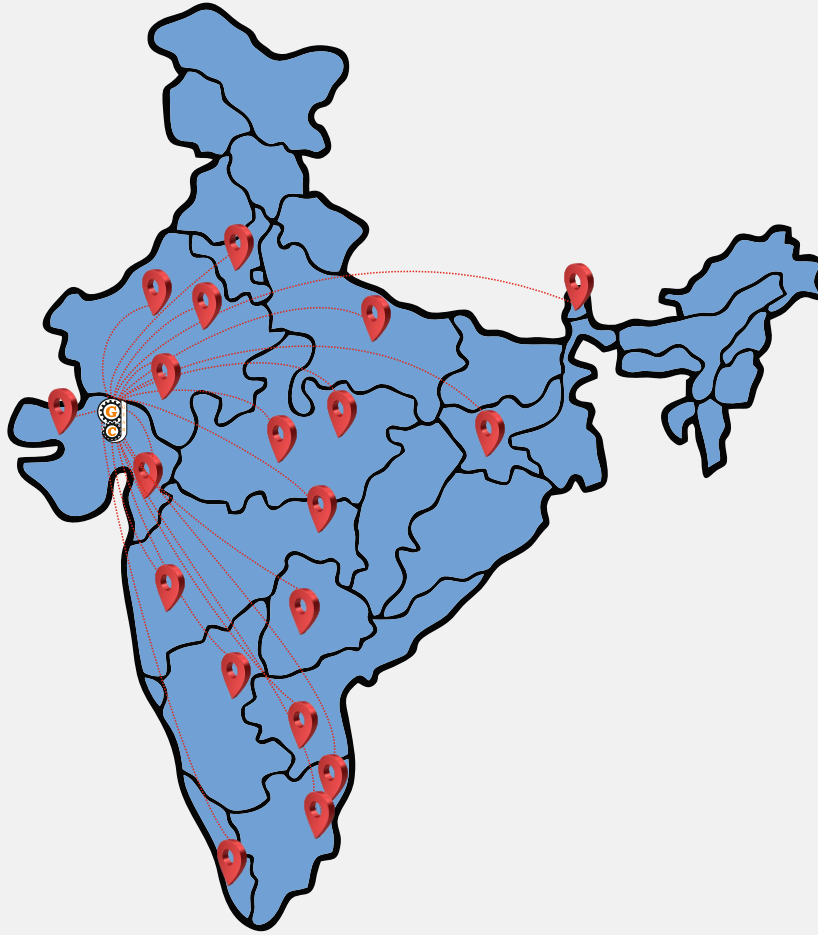
Piling Gears Box



F Series Gears Box  
(F37 to F157)

### OUR SATISFIED CLIENTS





**GAYATRI**

**Gear Sales Corporation**



A-35, Sai Industrial Estate, Nr. CNG Pump,  
Ahmedabad-Mehsana By-Pass Highway, Mehsana-384 435. (N.Guj.) INDIA



+91 92271 55132 (Sanket), +91 99786 55132 (Krishana), +91 99790 55132 (Office)



gayatrigear@rediffmail.com / contact@gayatrigearsales.com



www.gayatrigearsales.com

## Sales & Service Pan Network :

### Branch Office :

**K.K. ENTERPRISES** G-36 Balaji Tower 2nd Floor, Main Sikar Road,  
Nr. Manipal Hospital, Jaipur. (Rajasthan) Pin Code-302 039

**3D CORNER** Nr. S.T. Gregorious School, Shobhagpura,  
100 Ft Road, Udaipur. (Rajasthan) Pin Code-313 001

**S.R. MINECHEM** Shop No.1, 3rd Floor,  
Kamala Arcade, Ajmer Road, Bhilwara. (Rajasthan) Pin Code-311 001

**KP INDUSTRIAL CORPORATION.** 46/2, Venkate Ramanaik Lane,  
S.P. Road Cross, Bangalore. (Karnataka) Pin Code-560 002

